

**The Children and Family Research Center**  
**University of Illinois School of Social Work**



**APAL<sup>1</sup> Survey**  
**Database Codebook**

**Author: Dan Phillips**

---

<sup>1</sup> A.P.A.L. = Adoption Preservation and Linkages

## **OVERVIEW**

### **APAL Program**

The APAL program is conducted by select private foster care agencies in Illinois, whose service providers interview families either in person or over the phone. During the interviews, the needs of the household members are assessed by the service provider, who directs the families to the appropriate services ("linkage"). Questions are asked about every child, but while entering the data, the CFRC is identifying one "target" child per family, either 13 or 16 years of age at the "target date" for the interview. Interview answers about services are slotted into three distinct tables:

1. Table A – for target children, "Did the child **need the service** any time **within the past year**?"
2. Table B – for target children, "Does the child **need a referral** for the service **(now)**?"
3. Table C – for non-target children, "Does the child **need a referral** for the service **(now)**?"

The sample size for the A-PAL program is approximately 5,000 surveys (and growing, as the Department commits to the survey's continuation). Identifying data (names, addresses, etc.) is "preloaded" into the MySQL database located on XINIA (to be moved to VISION in early 2010). On the same server is the secure website for entering survey results as they come in.

The data entry system is located here (**moving to VISION in early 2010**):  
<https://xinia.social.uiuc.edu/macsvy/macsearch.php>

For researchers, the data is exported from MySQL into CSV format, which is then imported into SAS. For routine reporting to the DCFS, queries are run directly in MySQL (using Navicat software as interface), and the resulting numbers are fed into an Excel report template, which is then exported as a PDF<sup>2</sup>.

As of 1/20/10 the PROVIDER dataset contains 8585 observations and the CHILD dataset contains 18,993 observations.

### **Notes**

- Prior to October 2009, APAL data was kept in -- and entered into -- a Filemaker database.
- Some families have been interviewed more than once. As a result, the variables targetyear and targetmonth have been added to table keys to make them unique.
- The target year is a fiscal year (e.g., Fiscal Year 2009 = July 2008 through June 2009).

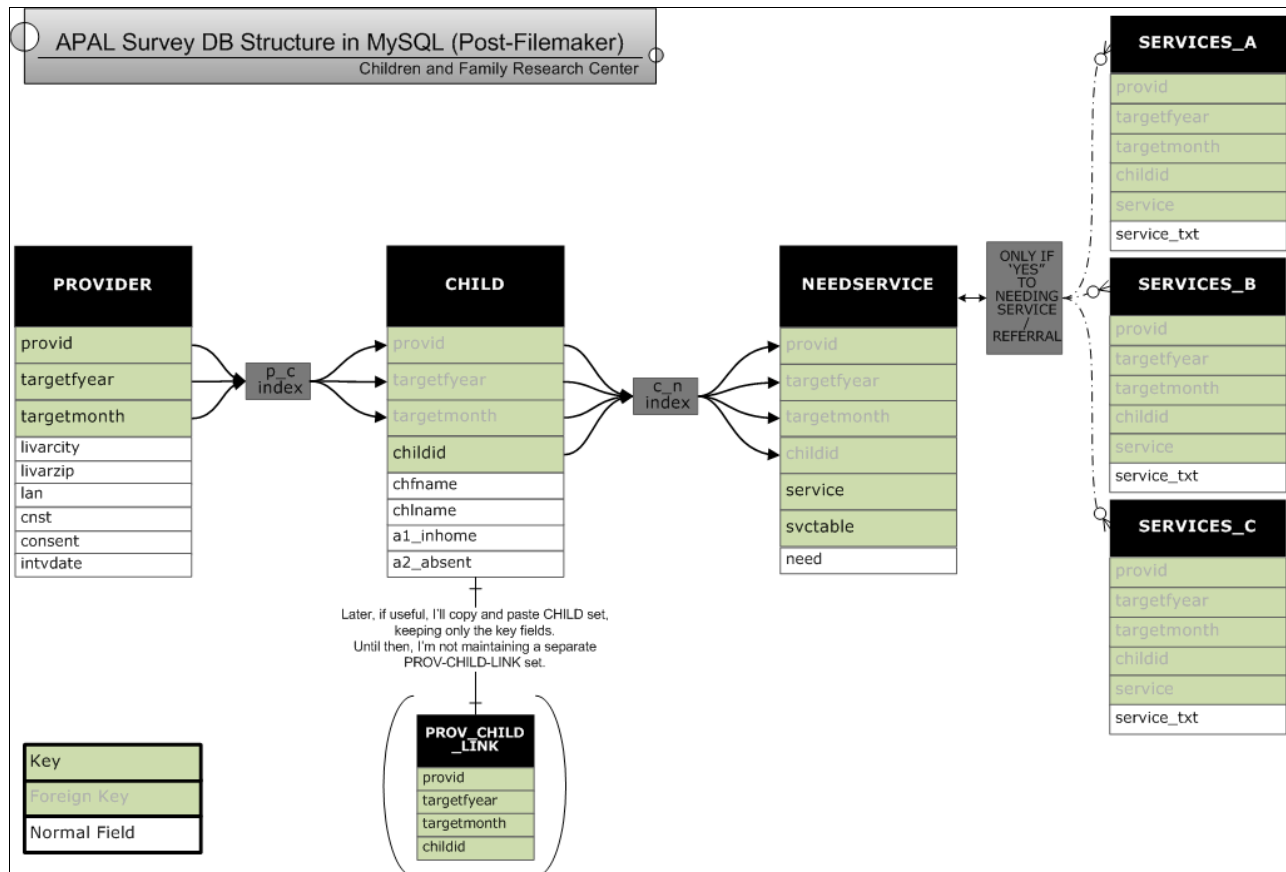
### **Data Disbursement**

- SAS data sets **with identifying data removed** will be placed in APSARA:/data2/APAL/YYYYMMDD/ (**APSARA data to move to VISION in early 2010 [??]**)
- Complete SAS data sets **with identifying data** will be mailed to Martin in Urbana, who will place them on SOPHIE in a directory of his choosing.
- This codebook should be available within the above directories, as well as at the following public web address: <http://xinia.social.uiuc.edu/codebooks>

---

<sup>2</sup>Reporting techniques may change as the project goes on.

## STRUCTURE



## DATA SETS

In the sets below, **highlighted** variables contain identifying data, and have been dropped from all data sets except those on SOPHIE. Internal notes:

- variables in **bold red text** are those that I've added during the transition from SAS to MySQL in October of 2009
- variables that are ~~crossed-out~~ are those that I've deleted during the transition from SAS to MySQL in October of 2009

<b>PROVIDER</b>				
<i>One record per caregiver family per target year and month containing information about the family and general information about the interview. This set was originally divided into "Provider" and "Interview" sets, but since these shared a key, I've combined them into one set for the transition from SAS to MySQL.</i>				
Unique key: provid + targetfyear + targetmonth				
Variable	Type	Len	Format	Label
provid	Char	6		Caregiver ID
targetfyear	Char	4		Target fiscal year
targetmonth	Char	2	\$MONTH.	Target month
prv1fname	Char	15		Caregiver1 first name
prv1lname	Char	30		Caregiver1 last name
prv2fname	Char	15		Caregiver2 first name
prv2lname	Char	30		Caregiver2 last name
livarstreet	Char	30		Street address
livarcity	Char	18		City
livarzip	Char	5		Zip code
livarphone	Char	12		Phone number
lan	Char	3		LAN
<b>county</b>	<b>Char</b>	<b>20</b>		<b>COUNTY (not included for FY2008 cases)</b>
agency	Char	26		Agency
cnst	Char	3		Consent I
consent	Char	1	\$CONSENT.	Consent II
intvdate	Num	8	MMDDYY8.	Interview Date
closedt	Num	8	MMDDYY8.	Close Date
moddate	Char	10		Record Update
a18_otherkids	Char	1		Need Referrals For Add'l AA/SG child
interview	Char	1	\$INTV.	Did Interview Take Place?
note	Char	500		Notes

## CHILD

One record per targeted child in the caregiver family per target year and month. There may be more than one targeted child per family. Targeted children are meant to be those who are 13 or 16 years old at the time of the interview.

Unique key: provid + targetfyear + targetmonth + childid

Variable	Type	Len	Format	Label
provid	Char	6		Caregiver ID
targetfyear	Char	4		Target fiscal year
targetmonth	Char	2	\$MONTH.	Target month
childid	Char	8		Child ID
subsidy	Char	1		Subsidy (* = target child)
subtype	Char	2		Subsidy type (AA or SG)
chfname	Char	15		Child first name
chlname	Char	30		Child last name
chsex	Char	1		Child gender
chbdate	Num	8	MMDDYY8.	Child birth date
a1_inhome	Char	1	\$YESNODK.	Is child currently in the home
a2_absent	Num	3		How many weeks has child been absent
a3_arrange	Char	1	\$YESNODK.	Did provider agree to this arrangement
a4_relation	Char	25		with whom is child currently living (relationship)
a5_return	Char	1	\$YESNODK.	Does provider expect child will return to this home
a6_return_date	Num	8	MMDDYY8.	Expected child return date date
a17_needref	Char	1	\$NEEDREF.	Does provider want referrals for this child
a19_interview	Char	1	\$INTV.	Interview type
a20_seetgt	Char	1	\$YESNODK.	Did you see the target child

## NEEDSERVICE

One record for each table for each service for each child per target year and month.

Table A contains data from the caregiver interviewed about each target child.

Table B is completed by the interviewer at the end of the assessment process for each target child. It is a summary of all service needs that were identified for each target child during the assessment process.

Table C is completed by the interviewer at the end of the assessment process. It is a summary of the service needs of the family with the exception of the target child(ren) whose needs are documented in Table B.

This is a HUGE dataset.

Unique key: provid+ targetfyear + targetmonth + childid+ service + table

Variable	Type	Len	Format	Label
provid	Char	6		Caregiver ID
targetfyear	Char	4		Target fiscal year
targetmonth	Char	2	\$MONTH.	Target month
childid	Char	8		Child ID
service	Char	1	\$SERVICE.	Service
svctable	Char	1		APAL Table A, B, or C
need	Char	2	\$YESNORE.	Need this service? (Yes, No OR 29 - Resource Only)

## SERVICES\_A

One record per service per target child per target year and month, but only if a need for that service was indicated for Table A on the needservice dataset. Table A contains data from the caregiver interviewed.

Unique key: provid + targetyear+ targetmonth + childid + service

Variable	Type	Len	Format	Label
provid	Char	6		CaregiverID
targetyear	Char	4		Target fiscal year
targetmonth	Char	2	\$MONTH.	Target month
childid	Char	8		Child ID
service	Char	1	\$SERVICE.	Service
<b>service_txt</b>	<b>Char</b>	<b>40</b>		<b>Service write-in, if "other"</b>
a8_include	Char	1	\$YESNODK.	Service included in agreement?
a9_tried	Char	1	\$YESNODK.	Tried to obtain this service?
<del>a10_contact</del>	<del>Char</del>	<del>40</del>	<del>\$A10X.</del>	<del>who contact to obtain service</del>
a10_contact01	Char	1	\$YESNOX.	Contacted DCFS post-adopt/guardianship unit/worker
a10_contact02	Char	1	\$YESNOX.	Contacted other DCFS staff
a10_contact03	Char	1	\$YESNOX.	Contacted Adoption Information Center of IL
a10_contact04	Char	1	\$YESNOX.	Contacted Adoption Preservation Services
a10_contact05	Char	1	\$YESNOX.	Contacted agency or provider directly
a10_contact06	Char	1	\$YESNOX.	Contacted other adoptive parents
a10_contact07	Char	1	\$YESNOX.	Contacted family friend
a10_contact08	Char	1	\$YESNOX.	Contacted family member
<b>a10_contact22</b>	<b>Char</b>	<b>1</b>	<b>\$YESNOX.</b>	<b>Contacted school</b>
a10_contact09	Char	1	\$YESNOX.	Contacted other for this service
a10_contact_txt	Char	40		Who contacted to obtain service (text)
<del>a10_contact_txtflag</del>	<del>Char</del>	<del>1</del>	<del>\$YESNOX.</del>	<del>Is there a text field for A10?</del>
a11_getting	Char	1	\$YESNODK.	Child currently getting service?
a12_agency	Char	40		Agency providing service
<del>a13_whopays</del>	<del>Char</del>	<del>30</del>	<del>\$A13X.</del>	<del>who pays for this service?</del>
a13_whopays1	Char	1	\$YESNOX.	Medical card pays for this service
a13_whopays2	Char	1	\$YESNOX.	Private insurance pays for this service
a13_whopays3	Char	1	\$YESNOX.	DCFS adoption agreement pays for this service
a13_whopays4	Char	1	\$YESNOX.	Caregiver self-pays for this service
<b>a13_whopays8</b>	<b>Char</b>	<b>1</b>	<b>\$YESNOX.</b>	<b>This was a free service</b>
a13_whopays5	Char	1	\$YESNOX.	Other form of payment for this service
a13_whopays_txt	Char	30		who pays for this service (text)
<del>a13_whopays_txtflag</del>	<del>Char</del>	<del>1</del>	<del></del>	<del>Is there a text field for A13?</del>
a14_outofpocket	Char	1	\$POCKET.	Provider paid out of pocket
a15_helpful	Char	1	\$HELPFUL.	How helpful is this service?
<del>a16_whynot</del>	<del>Char</del>	<del>200</del>	<del>\$A16XX.</del>	<del>why service not obtained</del>
a16_whynot1	Char	1	\$YESNOX.	No service because: No provider in area
a16_whynot2	Char	1	\$YESNOX.	No service because: Prvdr does not accept med card
a16_whynot3	Char	1	\$YESNOX.	No service because: Waiting list
a16_whynot4	Char	1	\$YESNOX.	No service because: Transportation issue
a16_whynot5	Char	1	\$YESNOX.	No service because: Inability to pay
a16_whynot6	Char	1	\$YESNOX.	No service because: Not included in subsidy
a16_whynot7	Char	1	\$YESNOX.	No service because: Did not try to get it
a16_whynot8	Char	1	\$YESNOX.	No service because: Other
a16_whynot_txt	Char	200		why service not obtained (text)
<del>a16_whynot_txtflag</del>	<del>Char</del>	<del>1</del>	<del></del>	<del></del>

### SERVICES\_B

One record per service per target child per target year and month, but only if a need for that service was indicated for Table B on the needservice dataset. Table B is completed by the interviewer at the end of the assessment process for each target child. It is a summary of all service needs that were identified for each target child during the assessment process.

Unique key: childid + targetyear+ targetmonth + service

Variable	Type	Len	Format	Label
provid	Char	6		Caregiver ID
targetyear	Char	4		Target fiscal year
targetmonth	Char	2	\$MONTH.	Target month
childid	Char	8		Child ID
service	Char	1	\$SERVICE.	Service
service_txt	Char	40		Service write-in, if "other"
b3_where_ref	Char	2	\$BC3X.	B: Referral to where
b3_specify	Char	60		B: Specify where referral
b4_refdate	Num	8	MMDDYY8.	B: Referral date

### SERVICES\_C

One record per service per target child per target year and month, but only if a need for that service was indicated for Table C on the needservice dataset. Table C is completed by the interviewer at the end of the assessment process. It is a summary of the service needs of the family with the exception of the target child(ren) whose needs are documented in Table B.

Unique key: childid + targetyear+ targetmonth + service

Variable	Type	Len	Format	Label
provid	Char	6		Caregiver ID
targetyear	Char	4		Target fiscal year
targetmonth	Char	2	\$MONTH.	Target month
childid	Char	8		Child ID
service	Char	1	\$SERVICE.	Service
service_txt	Char	40		Service write-in, if "other"
c3_where_ref	Char	2	\$BC3X.	C: Referral to where
c3_specify	Char	60		C: Specify where referral
c4_refdate	Num	8	MMDDYY8.	C: Referral date

# **PROV\_CHILD\_LINK**

One record for each provider-child pair per target year and month.

Note: This table can and will be created by simply copying all the relevant fields from the "Child" table.

Unique key: provid + targetfyear+ targetmonth

Variable	Type	Len	Format	Label
provid	Char	6		Caregiver ID
targetfyear	Char	4		Target fiscal year
targetmonth	Char	2	\$MONTH.	Target month
childid	Char	8		Child ID



## **SAS FORMATS / VALUE LABELS**

value \$pocket

'1' = 'Nothing'  
'2' = 'Less than \$100'  
'3' = '\$101 - 200'  
'4' = '\$201 - 300'  
'5' = '\$301 - 500'  
'6' = '\$501 - 1000'  
'7' = '\$1001 - 2000'  
'8' = '\$2001 - 5000'  
'9' = 'Over \$5000';

value \$helpful

'1' = 'Very helpful'  
'2' = 'Somewhat helpful'  
'3' = 'Not helpful'  
'4' = 'Harmful'  
'5' = 'Too early to determine';

value \$bc3x

'1', '1', '01' = 'Children's Home and Aid/Family Focus'  
'2', '2', '02' = 'Jewish Child and Family Services'  
'3', '3', '03' = 'Healthy Families'  
'4', '4', '04' = 'South Central Community Services'  
'5', '5', '05' = 'DCFS Post Unit/Family Matters'  
'6', '6', '06' = 'DCFS Post Unit/Deceased Caregiver Program'  
'7', '7', '07' = 'DCFS Post Unit/Older Caregiver Program'  
'8', '8', '08' = 'DCFS Post Unit/Subsidy Issues'  
'9', '9', '09' = 'Preservation Services (Catholic Charities)'  
'10' = 'Preservation Services (MFS)'  
'11' = 'Community Linkage'  
'12' = 'No referral'  
'13' = 'Other'  
'22' = 'School'  
'29' = 'Linkage/Resource Only';

value \$consent

'1' = '1: IDHFS only'  
'2' = '2: IDCFS only'  
'3' = '3: IDHFS + IDCFS'  
'4' = '4: No IDHFS, no IDCFS'  
'5' = '5: No form attached';

value \$intv

'A' = 'In person'  
'B' = 'Over the phone'  
'C' = 'After meeting w caregiver'  
'1' = 'Yes, in person'  
'2' = 'Yes, over the phone'  
'3' = 'No, unlocatable'  
'4' = 'No, client refused, everything OK'  
'5' = 'No, client refused, doesn't want to participate'  
'6' = 'No, child not in the home'  
'7' = 'Other'  
'8' = 'Unable to make contact';

value \$month

'01' = 'January'  
'02' = 'February'  
'03' = 'March'  
'04' = 'April'  
'05' = 'May'  
'06' = 'June'  
'07' = 'July'  
'08' = 'August'  
'09' = 'September'  
'10' = 'October'  
'11' = 'November'  
'12' = 'December';

value \$needref

'a', 'A' = 'On my own'  
'b', 'B' = 'Need assistance';

value \$service

'A', 'RC', 'rc' = 'Respite care'  
'B', 'DC', 'dc' = 'Day care/after school care'  
'C', 'CT', 'ct' = 'Counseling/therapy for AA/SG child'  
'D', 'FC', 'fc' = 'Family counseling/therapy'  
'E', 'RT', 'rt' = 'Residential treatment'  
'F', 'PE', 'pe' = 'Psychological evaluation'  
'G', 'PS', 'ps' = 'Access to a psychiatrist'  
'H', 'ED', 'ed' = 'Educational advocacy'  
'I', 'TU', 'tu' = 'Tutoring'  
'J', 'SP', 'sp' = 'Support group'  
'K', 'PR', 'pr' = 'Preservation services'  
'L', 'PH', 'ph' = 'Psychiatric hospitalization'  
'M', 'DT', 'dt' = 'Day treatment for psych hosp'  
'N', 'DA', 'da' = 'Drug/alcohol services'  
'O', 'ST', 'st' = 'Speech therapy'  
'P', 'PT', 'pt' = 'Physical therapy'  
'Q', 'OT', 'ot' = 'Occupational therapy'  
'R', 'SM', 'sm' = 'Specialized medical care'  
'S', 'OD', 'od' = 'Orthodontia/other special dental'  
'T', 'ME', 'me' = 'Durable medical equipment'  
'U', 'HM', 'hm' = 'Home modification for child's special needs'  
'V', 'CP', 'cp' = 'Camp'  
'W', 'OH', 'oh' = 'Other'  
'X', 'OO', 'oo' = 'Child out of home'  
'Y' = 'Pregnant/Parenting Services'  
'Z' = 'Mentoring';

value \$yesnodk

'0' = 'No'  
'1' = 'Yes'  
'8' = 'Don't know';

value \$yesnore

'0' = 'No'  
'1' = 'Yes'  
'29' = 'Linkage / resource only';

```
value $yesno  
'1' = 'Yes';
```